



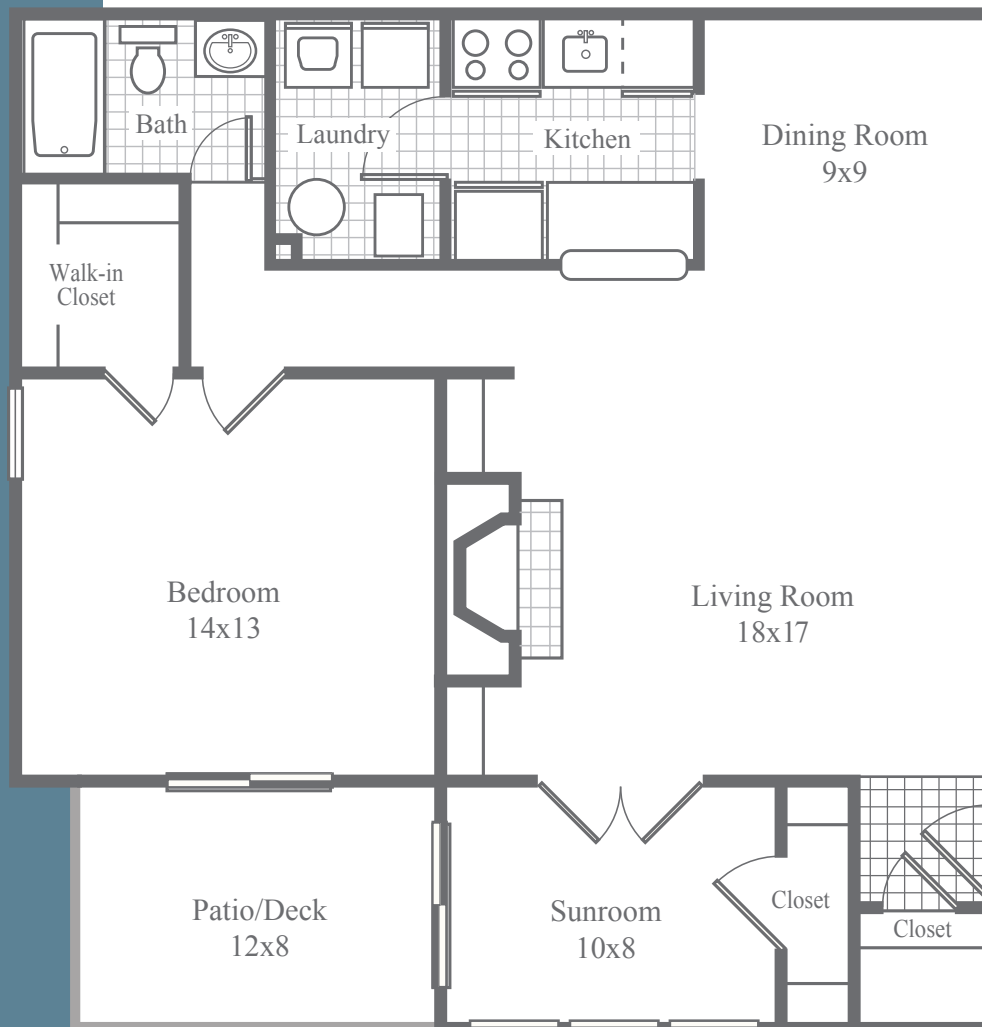
**CALIBRE  
WOODS**

LUXURY URBAN STYLE  
APARTMENT HOMES

## The Fillmore *Deluxe*

1 Bedroom • 1 Bath • Sunroom • 1040SF

- Stately fireplace mantel framed by built-in bookshelves
- Wood-burning fireplace with quartz or slate surround and gas starter
- Elegant white enamel crown molding
- High-speed cable and electrical outlets above fireplace mantel for optional wall mounted flat-panel TV
- Classically styled French doors lead from living area to four seasons sunroom
- Dining area with transitional track lighting on dimmer
- Kitchen equipped with stainless steel appliances, dual-basin stainless steel sink, built-in microwave, richly glazed hardwood cabinetry and LED recessed ceiling lights on dimmer
- Under-cabinet task lighting illuminates granite countertops and subway tile backsplash
- Laundry room accommodates full-size washer/dryer
- Beautiful oil-rubbed bronze hardware throughout apartment
- Bedroom with spacious walk-in closet and direct access to patio or deck
- Bonus storage closet in sunroom
- LED lighting for ambiance and energy efficiency
- Select apartments feature warm and inviting LVT wood flooring in kitchen, bath and living areas



*\*Dimensions are approximate*

2075 LaVista Road N.E. • Atlanta, GA 30329

Phone 404.634.4259 • Fax 404.325.1018 • Email [info@calibrewoods.com](mailto:info@calibrewoods.com)

[CalibreWoods.com](http://CalibreWoods.com)